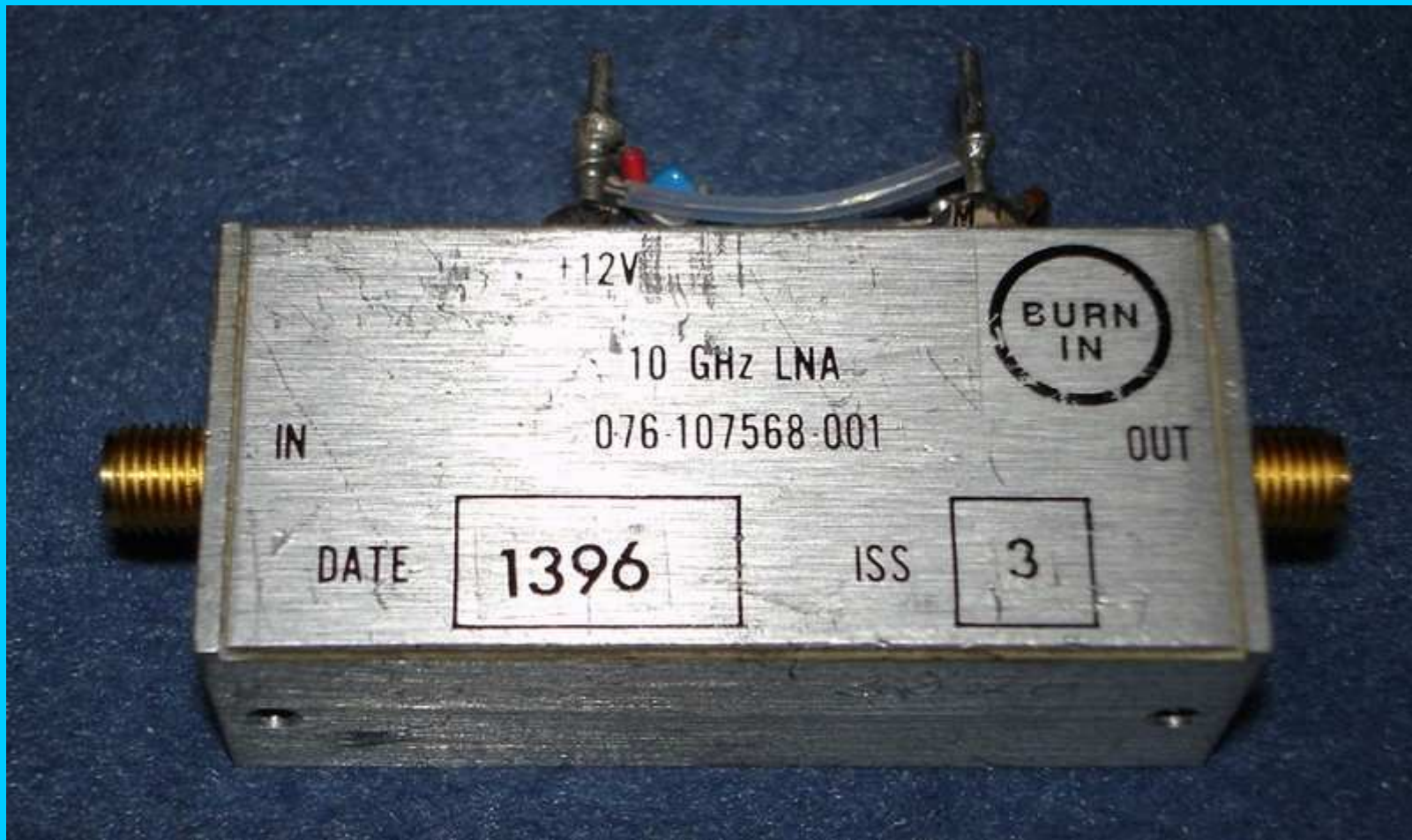


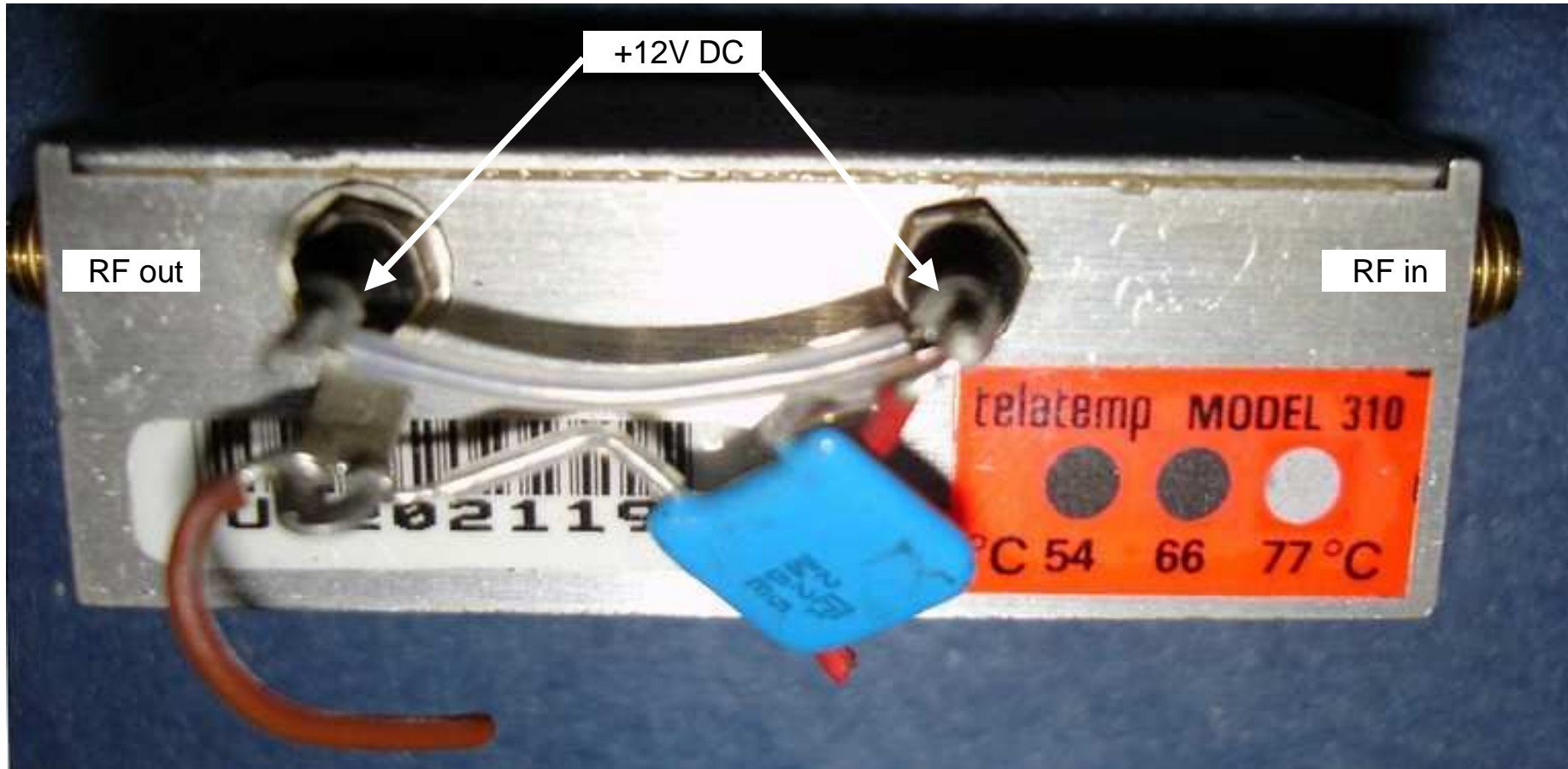
LNA Telatemp model 310



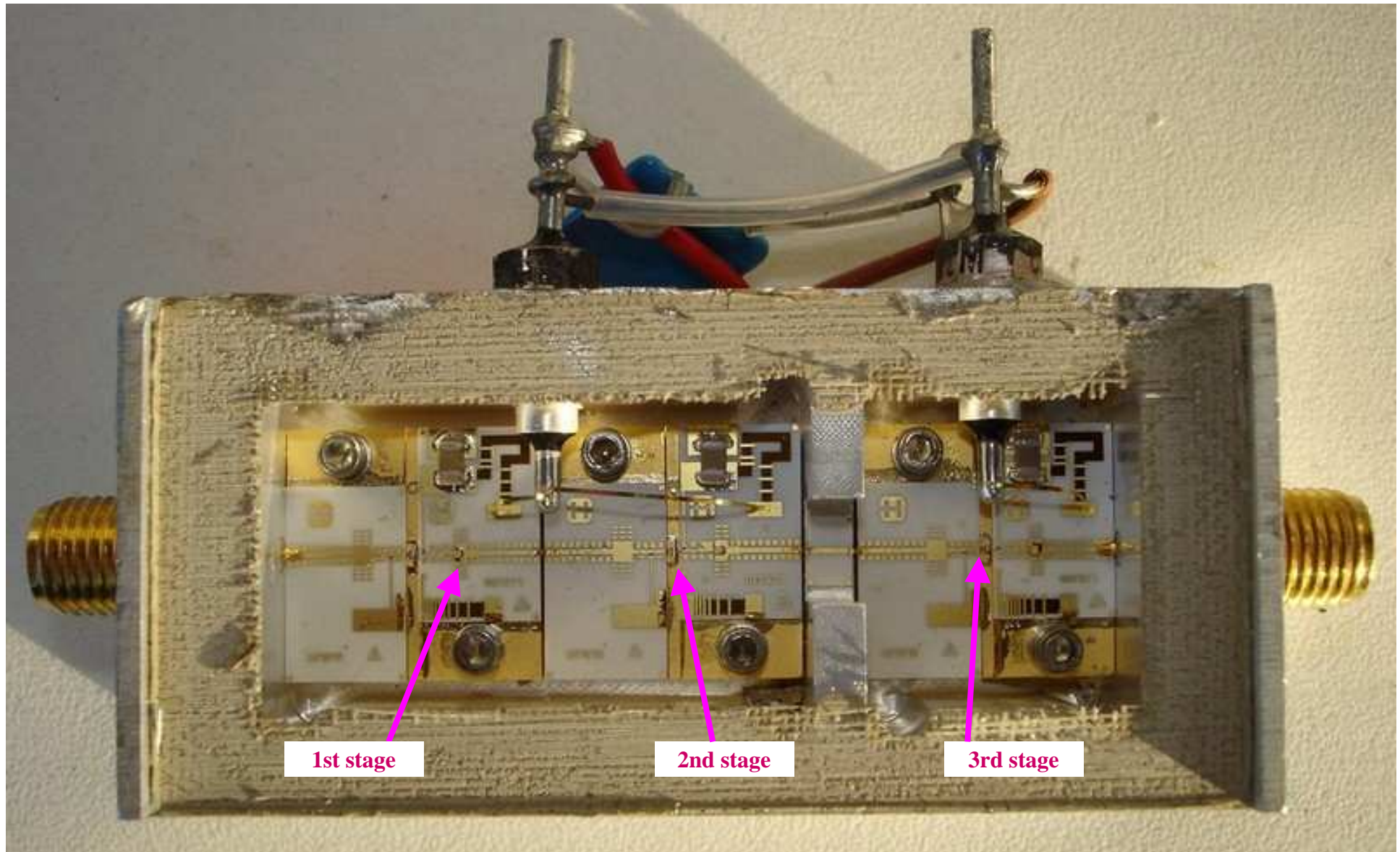
Abstract

- External view
- Internal view – zoom on passive and active components
- Scalar broadband measurements
- Noise/gain measures
- Conclusion

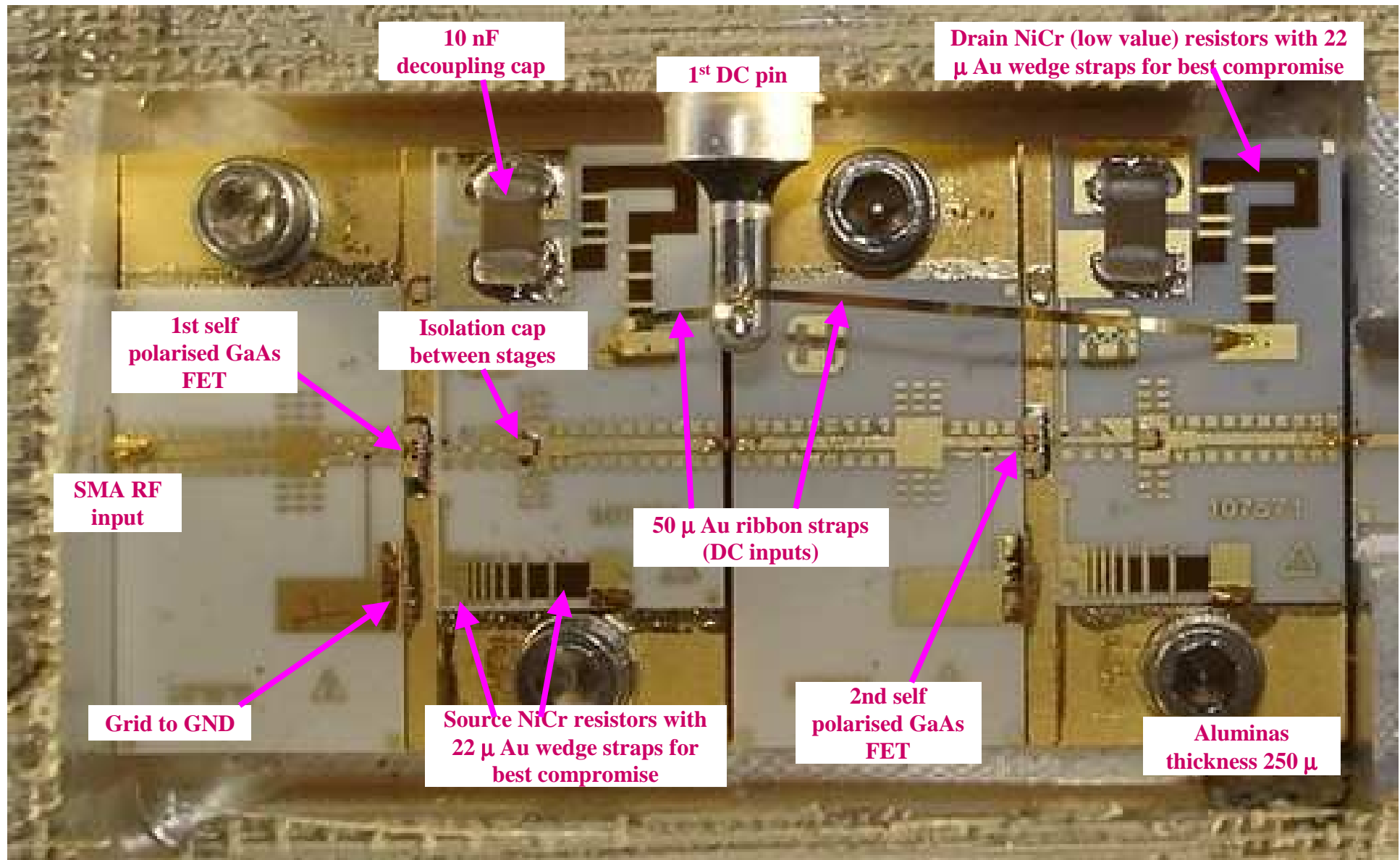
External view



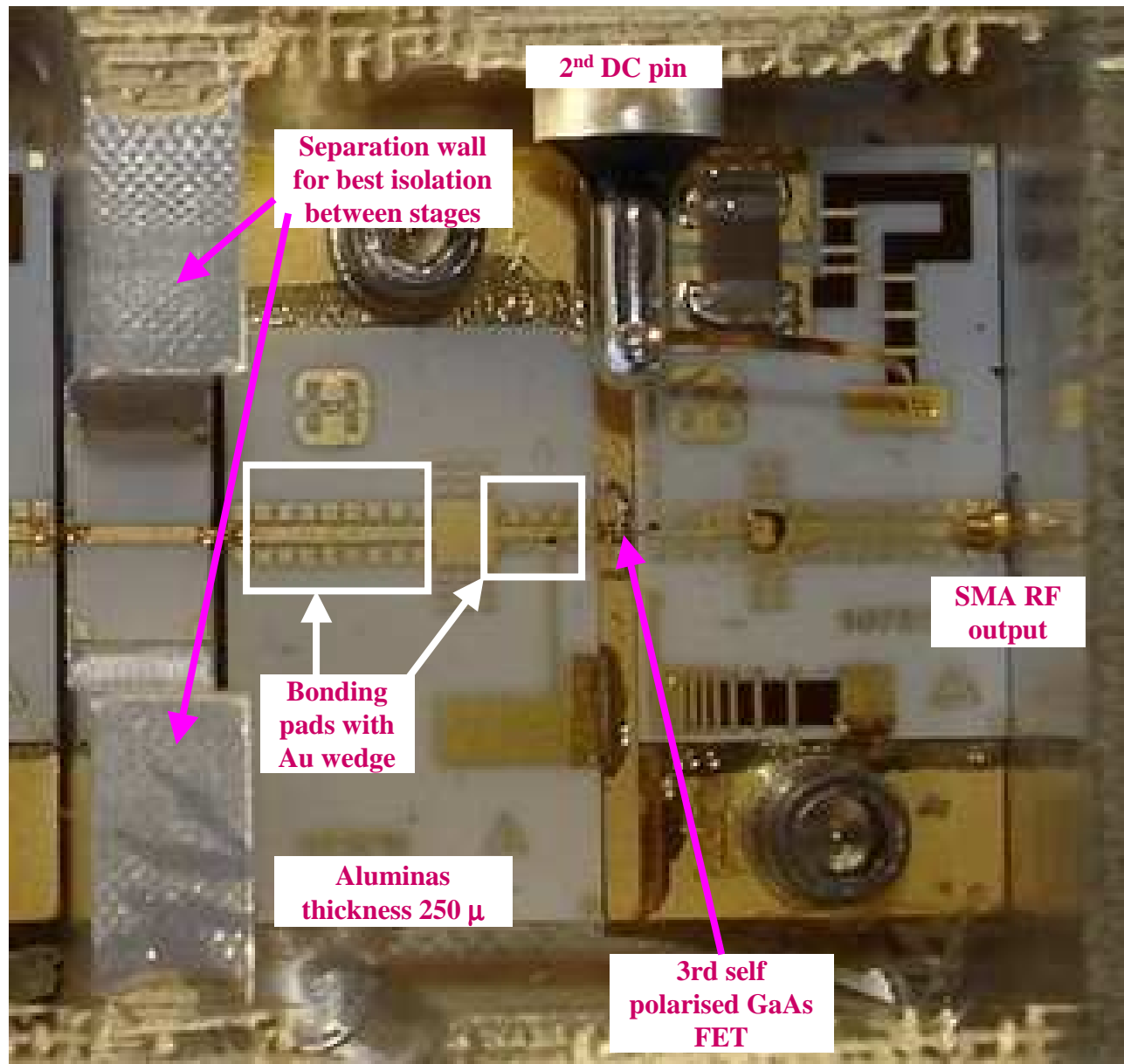
Internal view



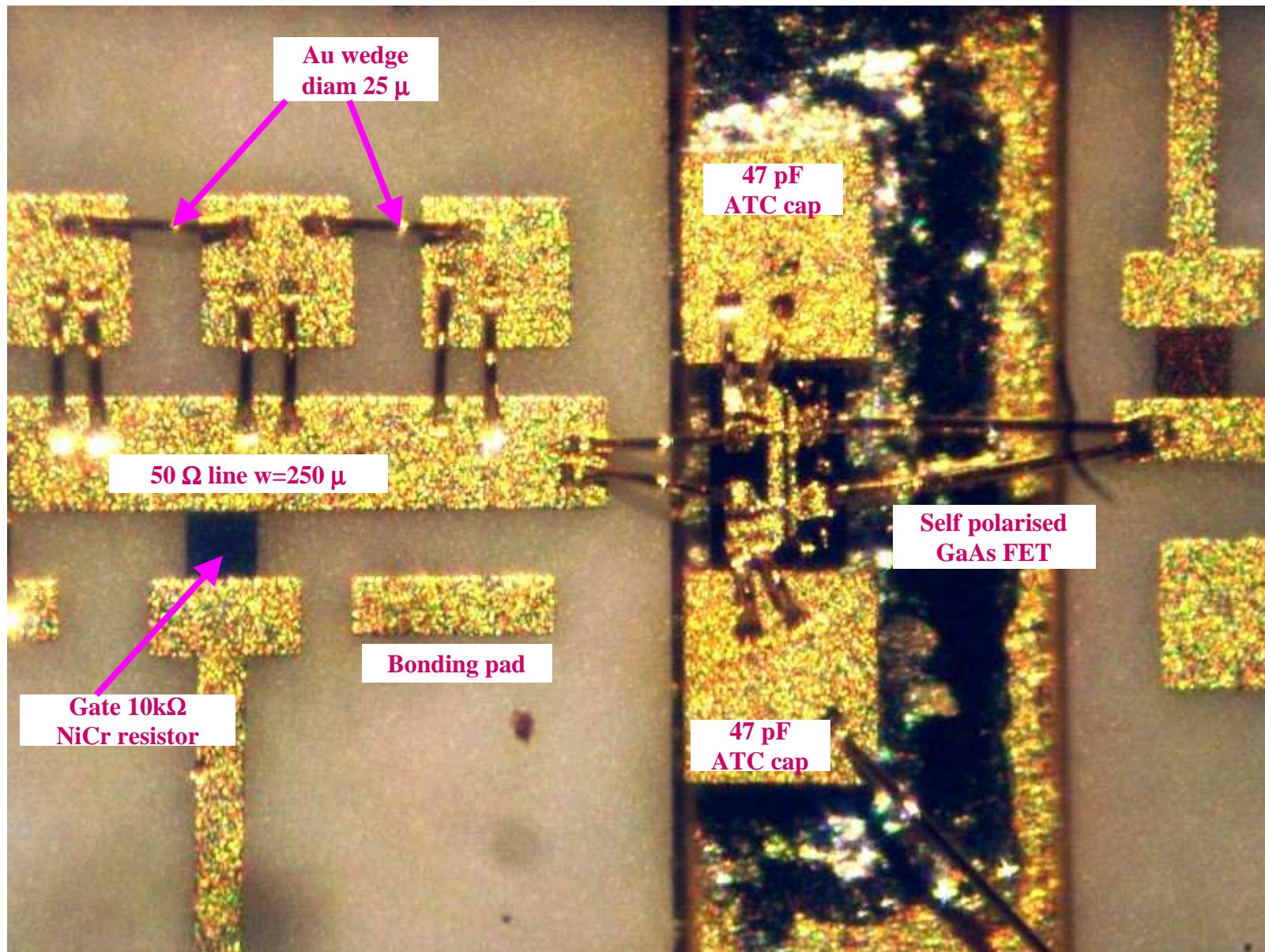
Internal view : zoom on 1st and 2nd stage



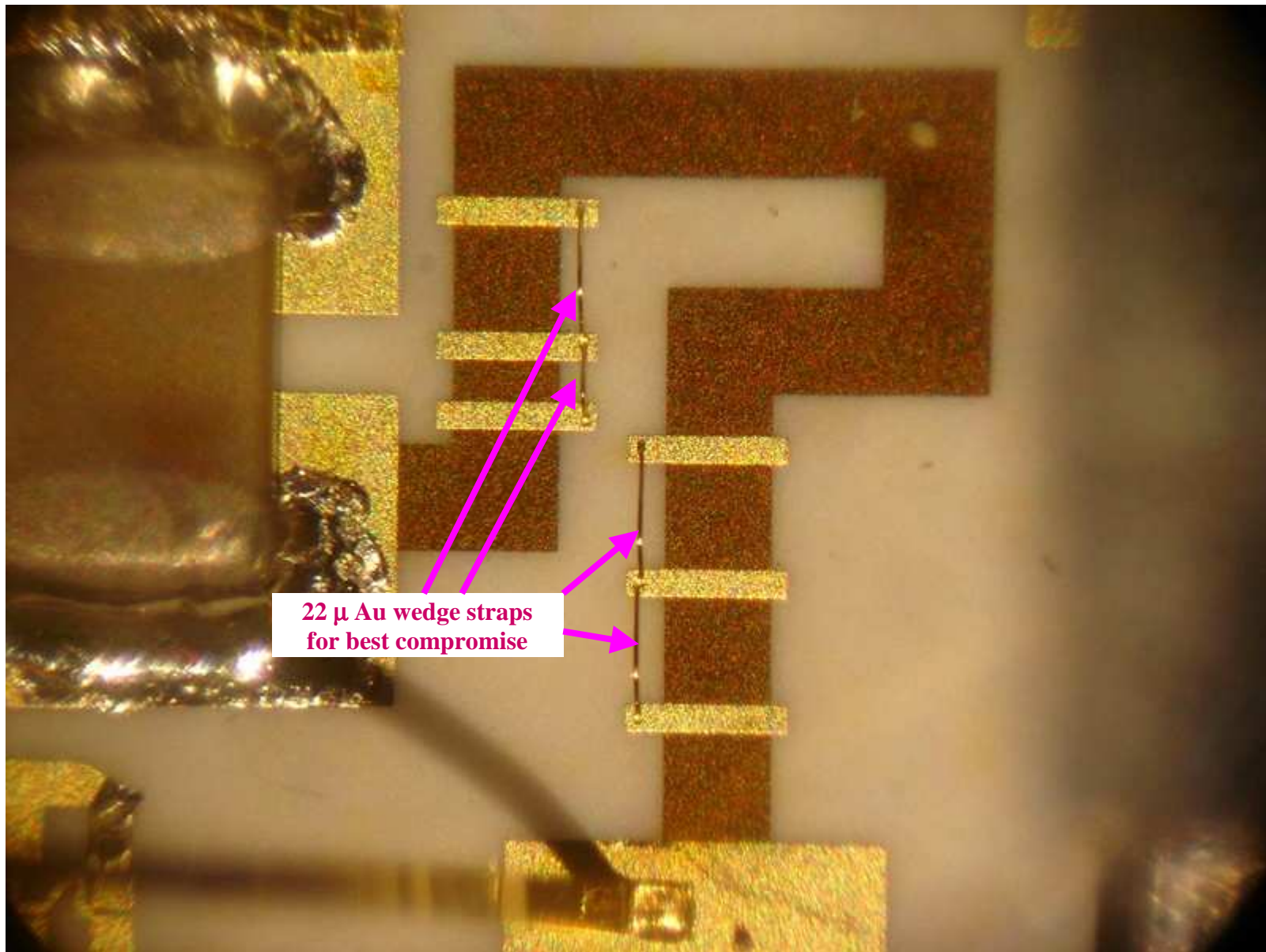
Internal view : zoom on 3rd stage



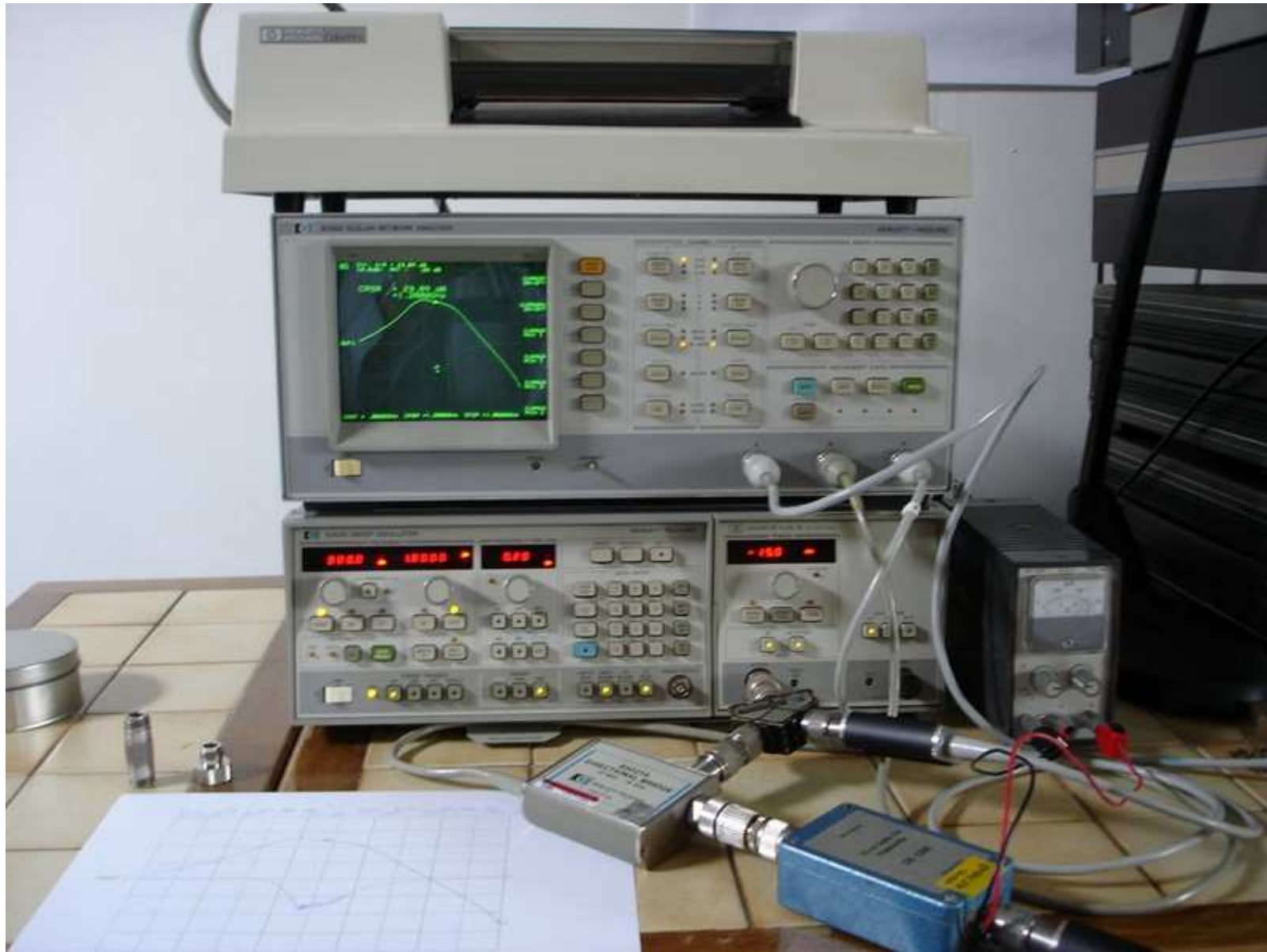
Internal view : stubing technique with bonding pads on Al2O3



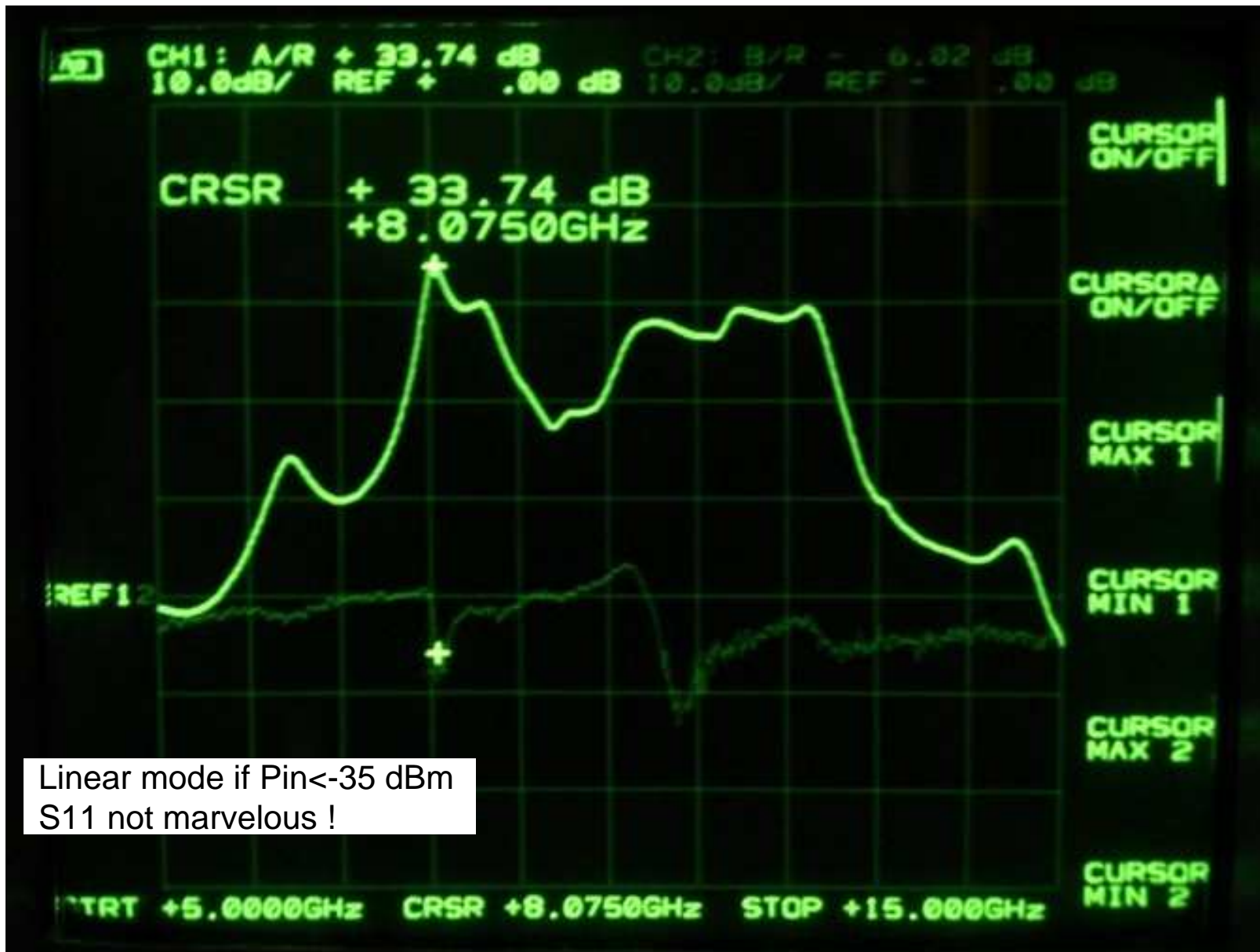
Internal view : zoom on NiCr drain resistor



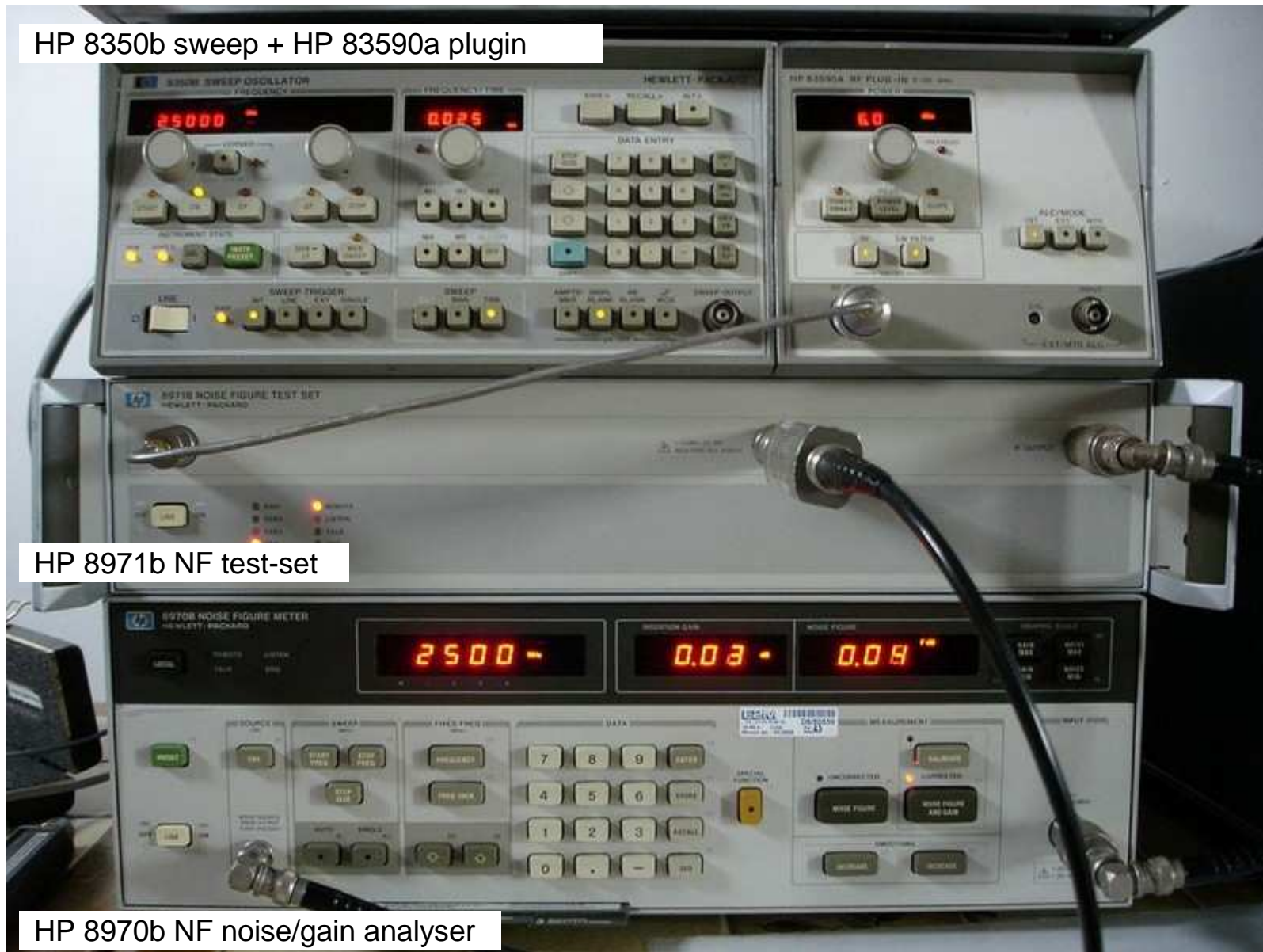
Scalar measurement setup



Scalar linear broadband curve

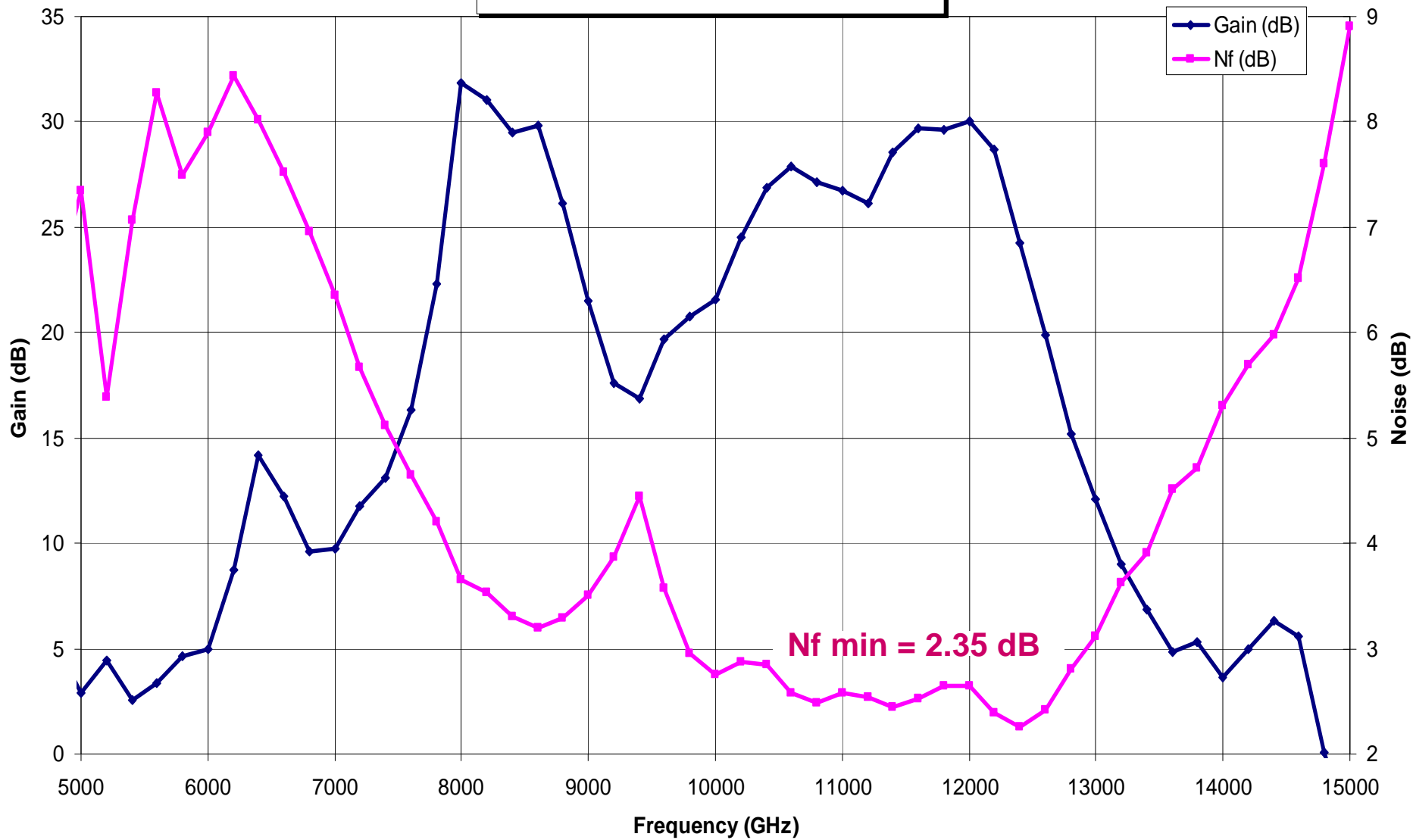


Gain/Nf measurement setup



Gain/Noise figure measurement

LNA TELATEMP model 310



Conclusion

Broadband LNA usable from :

- 7.8 to 8.8 GHz : gain > 25 dB and Nf < 3.5 dB
- 10.2 to 12.2 GHz : gain > 25 dB and Nf < 3 dB

A 10.360 GHz : gain 26.8 dB, Nf = 2.85 dB